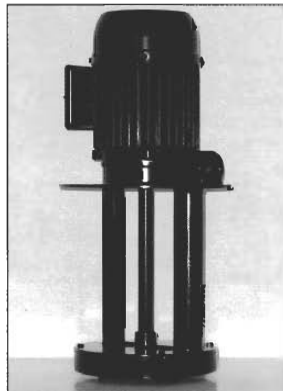


Caratteristiche - Features

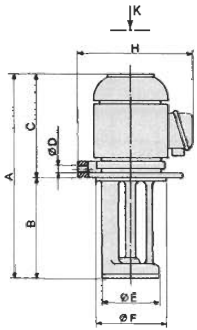
TIPO TYPE	KW assorb. - input	AMP 400 V.	PREVALENZA (metri) / PREVALENCE (meters)																		
			0	1	2	3	4	5	6	7	8	9	10	11	12	13	14	15	16	17	18
IMM 40/A	0,08	0,23	16	14	9	3															
IMM 50/A	0,11	0,30	24	22	18	10															
IMM 56/A	0,15	0,32	54	43	38	24	15		In produzione solo versione in ghisa - Versione alluminio sostituita da SPV Manufactured only with body pump in cast iron - Body pump in aluminium replaced with SPV												
IMM 56/B	0,16	0,56	80	64	49	42	25	5													
IMM 63/A	0,30	0,58	100	95	86	78	53	32													
IMM 63/B	0,40	0,90	115	110	103	96	82	64	41	7											
IMM 71/A	0,53	1,60	198	187	176	167	157	144	133	118	106	90	70	56	37						
IMM 71/B	0,78	1,90	230	220	210	200	190	180	167	154	138	122	109	90	77	60	39	13			
IMM 80/A	1,15	1,90	330	320	310	300	290	280	270	258	245	232	220	208	188	170	145	120	90		
IMM 80/B	1,47	2,80	400	390	380	370	360	347	335	322	310	300	290	270	245	220	190	165	138	100	60
IMM 90/A	1,85	5,00	740	730	710	690	670	650	630	580	530	470	410	350	230						
IMM 90/B	2,80	6,20	980	970	950	920	890	860	830	800	770	730	680	630	570						
IMM 100/B	4,43	8,60	1200	1170	1140	1105	1075	1040	1005	975	940	900	850	800	750	700	650	600	550	500	450



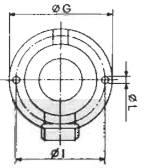
IMM 71



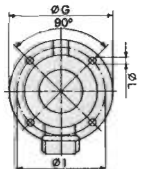
IMM 90



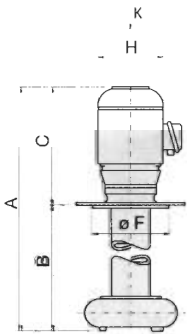
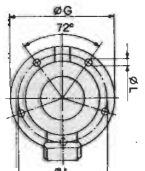
IMM 40/A
IMM 50/A



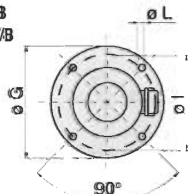
IMM 56/A
IMM 56/B
IMM 63/A
IMM 63/B



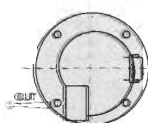
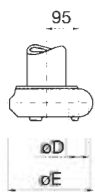
IMM 71/A
IMM 71/B
IMM 80/A
IMM 80/B



IMM 90/A
IMM 90/B
IMM 100/B



Vista secondo K
View from K



TIPO TYPE	A mm	B mm	C mm	ØD mm	ØE mm	ØF mm	ØG mm	H mm	ØI mm	ØL mm	PESO CON WEIGHT WITH KG.
IMM 40/A	219	80	139	3/8"	78	90	130	140	114	7 (N° 2)	1,80
	259	120									1,83
	289	150									1,85
	319	180									1,88
IMM 50/A	219	80	139	3/8"	78	90	130	140	114	7 (N° 2)	1,80
	259	120									1,83
	289	150									1,85
	319	180									1,88
IMM 56/A	349	180♦	169	1/2"	87	100	150	160	115	7 (N° 4)	3,20
	409	240♦									3,26
IMM 56/B	349	180♦	169	1/2"	87	100	150	160	115	7 (N° 4)	3,15
	409	240♦									3,26
IMM 63/A	355	150	205	3/4"	128	-	180	190	150	9 (N° 4)	5,65
	405	200									5,90
	455	250									6,15
	505	300★									6,40
IMM 63/B	355	150	205	3/4"	128	-	180	190	150	9 (N° 4)	6,15
	405	200									6,40
	455	250									6,65
	505	300★									6,90
IMM 71/A	475	200	230	1"	190	-	230	225	204	9 (N° 5)	10,50
	525	250									11,00
	600	325★									11,50
	715	440									12,00
IMM 71/B	475	200	230	1"	190	-	230	225	204	9 (N° 5)	11,00
	525	250									11,50
	600	325★									12,00
	715	440									12,50
IMM 80/A	500	200★	260	1 1/4"	190	220	250	260	235	9 (N° 5)	14,50
	550	250★									15,00
	600	300★									15,50
	650	350★									16,00
	830	530									18,00
IMM 80/B	500	200★	260	1 1/4"	190	220	250	260	235	9 (N° 5)	15,45
	550	250★									15,95
	600	300★									16,45
	650	350★									16,95
	830	530									19,00
IMM 90/A	670	350	345	2"	235	240	300	240	270	13 (N° 4)	47,50
	770	450									48,10
	920	600									48,80
	1120	800									50,00
IMM 90/B	695	350	345	2"	235	240	300	240	270	13 (N° 4)	49,00
	795	450									49,60
	945	600									50,30
	1145	800									51,50
IMM 100/B	730	350	380	2,1/2"	235	240	300	240	270	13 (N° 4)	53,00
	830	450									53,60
	980	600									54,30
	1180	800									55,50

★ Su richiesta corpo pompa in ghisa / Cast iron pump body on request — ♦ solo ghisa - only cast iron.